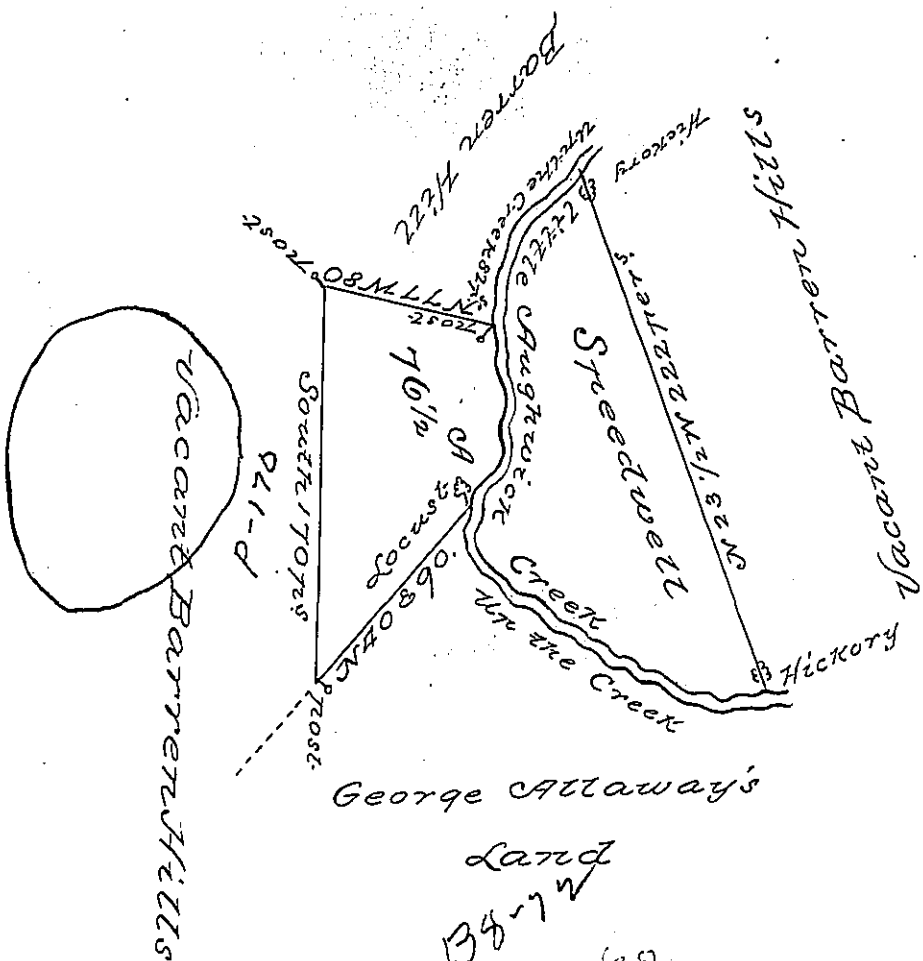


Courses from the Hickory to the Post.
S42° W 38 7/8'
S13° W 44 7/8'



Courses from the Locust to the Hickory
S56° E 138 7/8'
N71° E 20'

A Draught of a Tract of Land situate on a Little Aughwick Creek in the County of Cumberland containing seventy six Acres and a half and the usual allowance of six acres of Ct. for Roads &c. Surveyed for James ~~Hunter~~ Sterling in pursuance of an Order granted to James Hunter for the said James Sterling dated the 1st day of August 1766 and Numbered 226
of Richard Tea Dept Survey^r

To John Lukens Esq^r Survey^r Gen^l

IN TESTIMONY that the above is a copy of the original remaining on file in the Department of Internal Affairs of Pennsylvania, made conformably to an Act of Assembly approved the 16th day of February, 1833, I have hereunto set my Hand and caused the Seal of said Department to be affixed at Harrisburg, this

Third day of August 1897

James W. Fatto
Secretary of Internal Affairs.